

TRI-BUNDLE INSULATOR SPREADERS

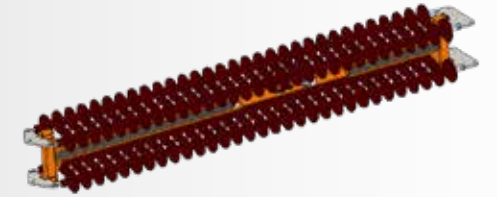
| MODEL | 81770 | 81770-01 | 81770-02 | 72272-08 |
|----------------------------------------------|-----------------------------------------|------------------------------------------|------------------------------------------|------------------------------------------|
| Inside of yoke plate to inside of yoke plate | 67" to 102" 1702 to 2591 (mm) | 94" to 148" 2388 to 3759 (mm) | 114" to 182" 2896 to 4623 (mm) | 257" to 273" 6528 to 6934 (mm) |
| Capacity | 2000 lb (907 kg) | 2000 lb (907 kg) | 2000 lb (907 kg) | 5500 lb (2495 kg) |
| Fine Adjustment Stroke | 9.13" (232 mm) | 9.13" (232 mm) | 9.13" (232 mm) | 14" (356 mm) |
| Compatible with Dual Bundle | No | No | No | No |
| Shipping Dimensions Collapsed | 82" x 6" x 24" 2083 x 152 x 610 (mm) | 108" x 6" x 24" 2743 x 152 x 610 (mm) | 130" x 6" x 24" 3302 x 152 x 610 (mm) | 282" x 6" x 17" 7163 x 152 x 432 (mm) |
| Weight | 270 lb (122.5 kg) | 335 lb (152 kg) | 375 lb (170 kg) | 961 lb (436 kg) |

DUAL-BUNDLE INSULATOR SPREADERS



| PART NUMBER | 81770 | 81770-01 | 81770-02 |
|----------------------------------------------|-----------------------------------------|------------------------------------------|------------------------------------------|
| Inside of yoke plate to inside of yoke plate | 75" to 101" 1905 to 2565 (mm) | 102" to 156" 2591 to 3962 (mm) | 122" to 190" 3099 to 4826 (mm) |
| Capacity | 1500 lb (680 kg) | 1500 lb (680 kg) | 1500 lb (680 kg) |
| Fine Adjustment Stroke | 9.13" (232 mm) | 9.13" (232 mm) | 9.13" (232 mm) |
| Compatible with Quad Bundle | Yes | Yes | Yes |
| Compatible with Tri Bundle | No | No | No |
| Shipping Dimensions Collapsed | 82" x 6" x 24" 2083 x 152 x 610 (mm) | 108" x 6" x 24" 2743 x 152 x 610 (mm) | 130" x 6" x 24" 3302 x 152 x 610 (mm) |
| Weight | 270 lb (122.5 kg) | 335 lb (152 kg) | 375 lb (170 kg) |

QUAD-BUNDLE INSULATOR SPREADERS



| MODEL | 72272-05 | 81770 | 81770-01 | 81770-02 |
|----------------------------------------------|--------------------------------------------|-----------------------------------------|------------------------------------------|------------------------------------------|
| Inside of yoke plate to inside of yoke plate | 182" to 230" 4629 to 5842 (mm) | 75" to 101" 1905 to 2565 (mm) | 102" to 156" 2591 to 3962 (mm) | 122" to 190" 3099 to 4826 (mm) |
| Capacity | 2500 lb (1134 kg) | 2500 lb (1134 kg) | 2500 lb (1134 kg) | 2500 lb (1134 kg) |
| Fine Adjustment Stroke | 8" (203 mm) | 9.13" (232 mm) | 9.13" (232 mm) | 9.13" (232 mm) |
| Compatible with Dual Bundle | No | Yes | Yes | Yes |
| Compatible with Tri Bundle | No | No | No | No |
| Shipping Dimensions Collapsed | 185" x 5" x 23.5" 4699 x 127 x 597 (mm) | 82" x 6" x 24" 2083 x 152 x 610 (mm) | 108" x 6" x 24" 2743 x 152 x 610 (mm) | 130" x 6" x 24" 3302 x 152 x 610 (mm) |
| Weight | 490 lb (222 kg) | 270 lb (122.5 kg) | 335 lb (152 kg) | 375 lb (170 kg) |



FEATURES

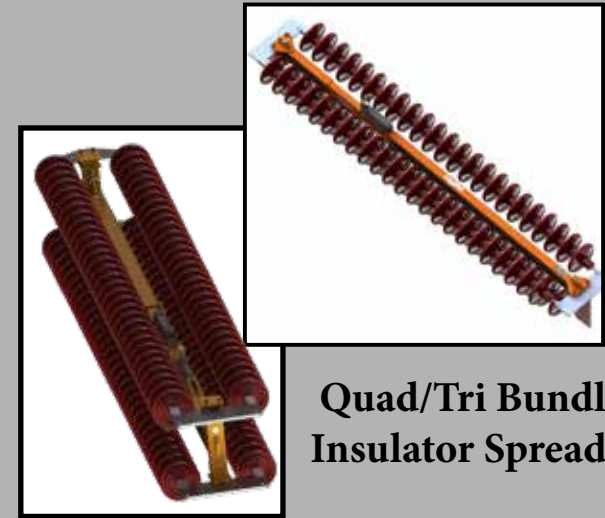
- (2) 6,600 lb (2994 kg) capacity shackle anchors (1 on each end to assist in lifting)
- Cylinder attached to sliding arm
- Two speed hand pump



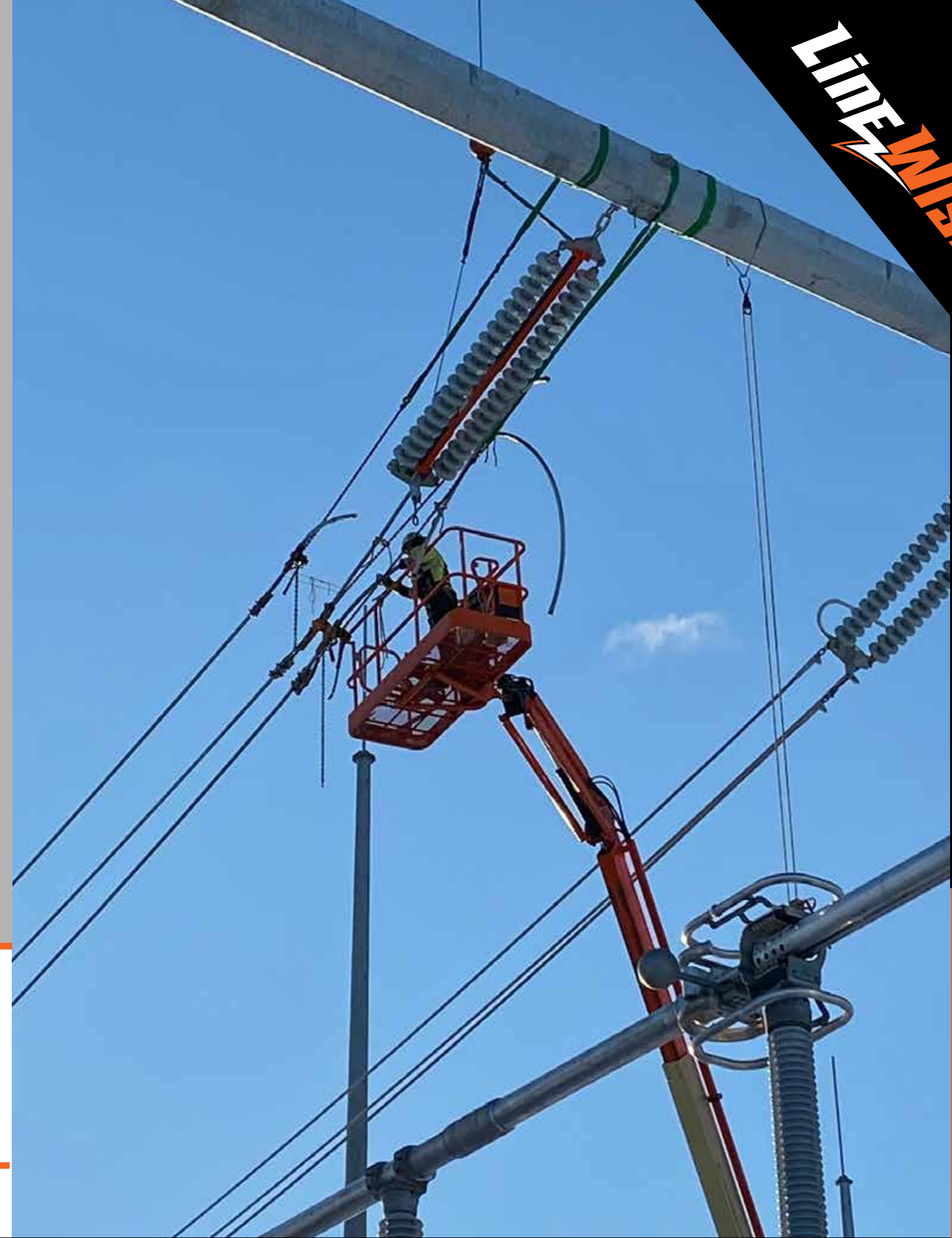
- Clamping bolts on each end to secure yoke plates
- Adjustable arm length
- Rubber pads to protect insulator bells

OPTIONS

- Tri Bundle Insulator Spreader
- Quad Bundle Insulator Spreader
- Custom capacity/length available



Quad/Tri Bundle Insulator Spreader



**INSPIRED,
TESTED,
AND TRUSTED
BY LINWORKERS**



Material and specifications are subject to change without notice. Units in photos may include optional features. Contact a LineWise representative for available options. LineWise® and the LineWise logo are registered trademarks of Fritel & Associates, LLC and may not be used without permission. © 2026 Diversified Product Development All Rights Reserved.