



Scout 1N

- Single conductor
- 300 lb. capacity
- Non-powered
- Weighs 80 lb.



Ranger 2N & 2G

- Double bundle conductor
- 400 lb. capacity
- 18" horizontal bundle spacing
- Non-powered & gas-powered
- Weighs 200 lb. w/engine
- Weighs 100 lb. w/o engine



TrailBlazer 2-3N & 2-3E

- Double or tri-bundle conductor
- MetMachEx Brand
- 500 lb. capacity
- Weighs max 175 lb.
- Collapsible safety net
- Non-powered & electric-powered



Pioneer 3E

- Tri-bundle conductor
- 600 lb. capacity
- Electric-powered
- Weighs 950 lb.



Swing Gate Wire Holders

- 300 lb. side & downward load; 100 lb. gate load
- 500 lb. side & downward load; 200 lb. gate load
- 2500 lb. side & downward load; 500 lb. gate load
- 4000 lb. side & downward load; 1000 lb. gate load
- Used on BOTH vertical & horizontal construction with the gate loaded



Hot Jibs

- CERTIFIED HOT TOOL
- Capacity = same as OEM



Anchor Testers

- 45,000 lb capacity at 2,200 psi
- 40,000 lb capacity at 1,950 psi
- Angle of pull: 50-100°
- Weight = 1500 lb



Tower Platforms

- Crane or helicopter deployed
- 600 - 1,000 lb. capacity
- 20', 30', or 40' long
- Customized to your specifications



700 Research Ave.
Waco, TX 76705

254-757-1177
www.line-wise.com
sales@line-wise.com
©2025 Diversified Products



**INSPIRED,
TESTED,
AND TRUSTED
BY LINEWORKERS**

Material and specifications are subject to change without notice. Units in photos may include optional features. Contact a LineWise representative for available options.

LineWise® and the LineWise logo are registered trademarks of Fritel & Associates, LLC and may not be used without permission.

© 2025 Diversified Product Development All Rights Reserved.



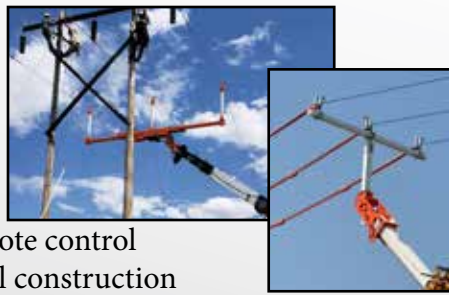
Utility Products





Triple Line Lifters

- 7.5 kV - 765 kV
- Handheld radio remote control
- Vertical & horizontal construction
- Hydraulic articulation, extension & retraction
- For digger derricks, cranes and boom trucks



Manual/Hydraulic Energized Line Lifters

- Up to 345 kV
- Up to 16,000 lb.
- 1, 2, 3, or 6 conductors per phase



Insulated Work Platforms

- Up to 765 kV barehand work
- Converts regular crane into barehand unit
- Working height up to 209'
- 1,200 lb. basket capacity
- Conductor lifter option



Sag Plates

- Sag and terminate conductors off the dead-end yoke plate
- 25,000 lb. capacity (per pair)
- Horizontal or vertical double bundles



Longhorn Guard Arms™

- Up to 1,200 lb.
- Mounts to boom trucks/digger derricks/telehandlers



Hot Line Base Plates

- Up to 4,000 lb.
- Temporarily holds a conductor in place during planned or emergency repairs



Hot Line Base Plate Skids

- Holds (3) HLBP, insulators, and wire holders
- 115kV - 345kV
- Stackable 3 high



Roller Conductor Lifters

- 2,000 to 12,000 lb.
- single/dual/triple/heavy duty



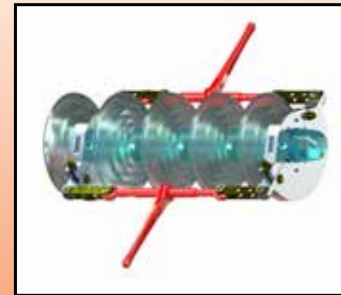
Insulator Spreaders

- Up to 765 kV
- Non-insulated tool to remove/install dead-end insulator strings



Insulator Retractors

- Device used to compress strings of insulator bells for removal of individual bells that need to be replaced or serviced.
- Aluminum construction
- 10,000 lb capacity



Buddy Bushings

*****PROBLEM*****

Erosion of the attachment hole in the arm due to vibrations

****SOLUTION****

Buddy Bushing inserted into attachment hole in cross arm



Pole Braces

- Up to 30,000 lb.
- Max pole diameter: 6'
- Max pole length: 65'



Slip Joint Pole Jacks

- Holds equipment needed to jack the pole sections together by supporting the cylinders on one end and the engine/hydraulic pump on the other.



Pole Sitters

- Up to 3,000 lb.
- Safer and superior to standard hole cribbing



Pole Pullers

- Up to 120,000 lb.
- Unique jaws to grab pole
- Stub puller attachment
- Adjustable base option

