

**NO
ADAPTER
NEEDED**

LINEWISE

Longhorn™ Fork Mounted Guard Arm

254-757-1177 | sales@line-wise.com | line-wise.com

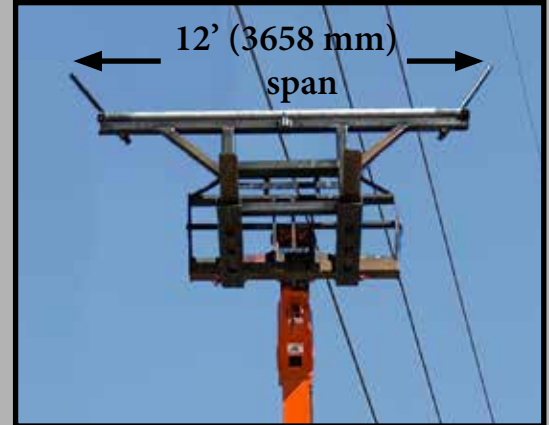
SPECIFICATIONS

Dimensions	145" x 42" x 85" tall 3683 mm x 1067 mm x 2159 mm tall
Capacity (Guard Arm)	1200 lb (544 kg)
Capacity (Telehandler)	Minimum 8000 lb (3629 kg)
Weight	607 lb (275 kg)
Mounting	Telehandler forks



FEATURES

- Engineered solution to guard against conductor drops across right-of-way crossings.
- NO ADAPTER NEEDED
- Mounts directly on a telehandler
- 12' (3658 mm) span from tip to tip of ear
- Deploy/Stow in 30 seconds
- Fork pocket rear locking pin meets latest OSHA safety requirements
- Ears conveniently stow on unit during transport
- Guard arm cross roller is on bearings to allow it to roll if the conductor comes in contact with it



INSPIRED,[™]
TESTED,
AND TRUSTED
BY LINEWORKERS



LineWise

Material and specifications are subject to change without notice. Units in photos may include optional features. Contact a LineWise representative for available options. LineWise® and the LineWise logo are registered trademarks of Fritel & Associates, LLC and may not be used without permission.
© 2025 Diversified Product Development All Rights Reserved.



254-757-1177 | sales@line-wise.com | line-wise.com