

The Triple Line Lifter-2000 Series 3 is an insulated crane attachment used to support up to three energized lines.

The TLL-2000-S3

- Maximum capacity of 2000 pounds (907 kg) per phase with a total capacity of 6000 pounds (2722 kg).
- Own or lease a unit and use it on your own schedule.
- Faster set up time.
- Radio remote provides the crew in the bucket with complete control of the unit's functions and avoids having to relay desired movements to ground personnel working the controls.
- Ability to capture phases and neutrals/statics with the same crane. Reducing the equipment needed at a job site and further eliminates shutdown of transmission lines for maintenance.
- One base unit can fit multiple crane models with additional adapters and load charts.



FEATURES

- Hydraulic articulation, extension & retraction
- Quick attach insulators & wire holders
- Insulators are lab tested
- Field installation and training with every unit
- Operation, Maintenance and Parts manual included
- Custom load charts for your crane model(s)
- Vertical and horizontal line construction
- High strength steel and fiberglass fabrication
- Holding valves on all cylinders
- Manual override control valve
- Handheld radio remote control
- Installed at ground level



Transportation Skid

- Fork pockets
- Lift rigging and tie down points
- Compartments for:
 - Insulators, wire holders & pins
- 4 corner jacks to level skid to crane
- Steps/handrails to access boom tip for installation



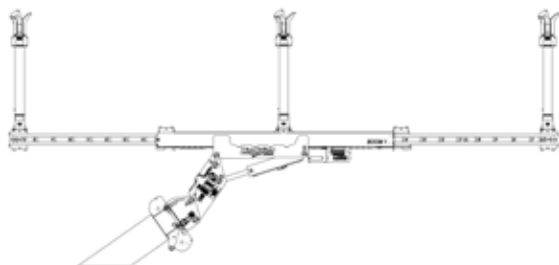
Hydraulic Power Unit

- 2,500 psi (17237 kPa) and 5 gpm (19 l/min)
- Hose reel with power return
- Gasoline engine 10HP (7457 watts) / electric start
- 130' (39624 mm) of nonconductive hose (2)
- Fork pockets, 4 lifting rings with rigging

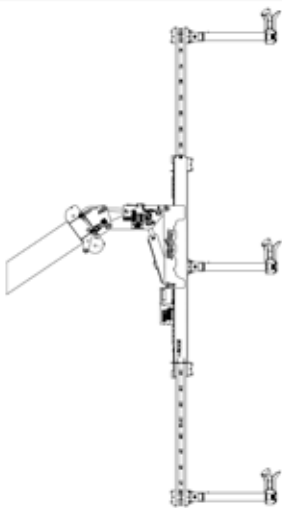
SPECIFICATIONS

Voltage (#) Phases	Capacity per phase
69 kV (3) phases	2000 lb (907 kg)/6000 (2722 kg) total
115 kV (3) phases	2000 lb (907 kg)/6000 (2722 kg) total
138 kV (3) phases	2000 lb (907 kg)/6000 (2722 kg) total
161 kV (3) phases	2000 lb (907 kg)/6000 (2722 kg) total
230 kV (3) phases	2000 lb (907 kg)/6000 (2722 kg) total
Total unit weight (Approx.)	
TLL-2000 with skid	7400 lb (3357 kg)
TLL-2000 w/o skid	4750 lb (2155 kg)
Max. Phase Spacing	
Outside to Outside	48' (14630 mm)
Center to Outside	24' (7315 mm)
Min. Phase Spacing	
Outside to Outside	24' (7315 mm)
Center to Outside	12' (3658 mm)
Maximum Horizontal Load per Phase	2000 lb (907 kg)
Maximum Vertical Load per Phase	2000 lb (907 kg)
Insulator	Fiberglass
Hydraulic	Yes
Mounting	Minimum 50 Ton Crane

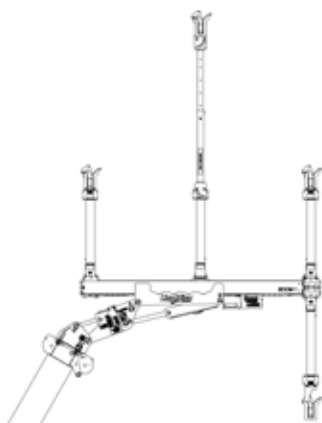
CONFIGURATIONS



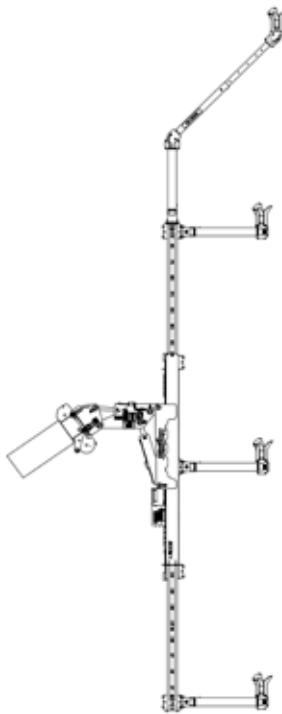
Horizontal Configuration



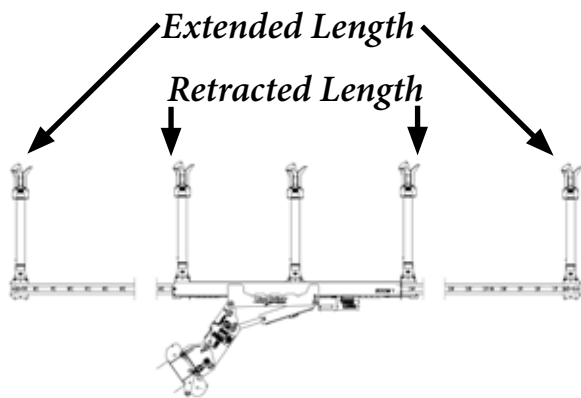
Vertical Configuration



Horizontal Configuration with Monopole Static Arm and Delta Arm Attachment



Vertical Configuration with Monopole Static Arm Attachment



Horizontal Configuration with Dual Monopole Static Arm Attachment

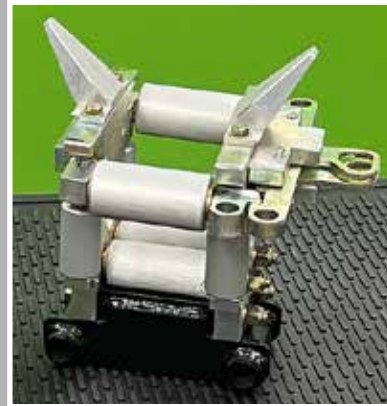
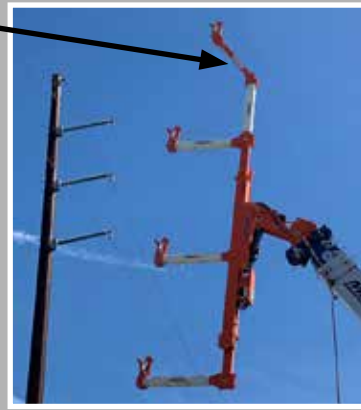
OPTIONS

- Adapter to use with different crane
- Adjustable static arm for monopole
- Delta wire holder
- Universal wire holder
- Vertical/horizontal bundle lifter
- Product operational by hydraulics on crane
- 2' (210 mm) boom span extender
- 1' (305 mm) insulator boom span adapter
- Storage skid for add on insulators
- Fully covered skid
- Trailer



Delta Wire Holder

Static Arm



Universal Wire Holder



**INSPIRED,
TESTED,
AND TRUSTED
BY LINeworkERS**



LineWise

LineWise

Triple Line Lifter-2000-S3



Material and specifications are subject to change without notice. Units in photos may include optional features. Contact a LineWise representative for available options. LineWise® and the LineWise logo are registered trademarks of Fritel & Associates, LLC and may not be used without permission.
© 2025 Diversified Product Development All Rights Reserved.