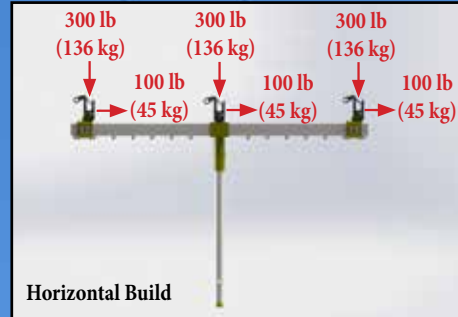
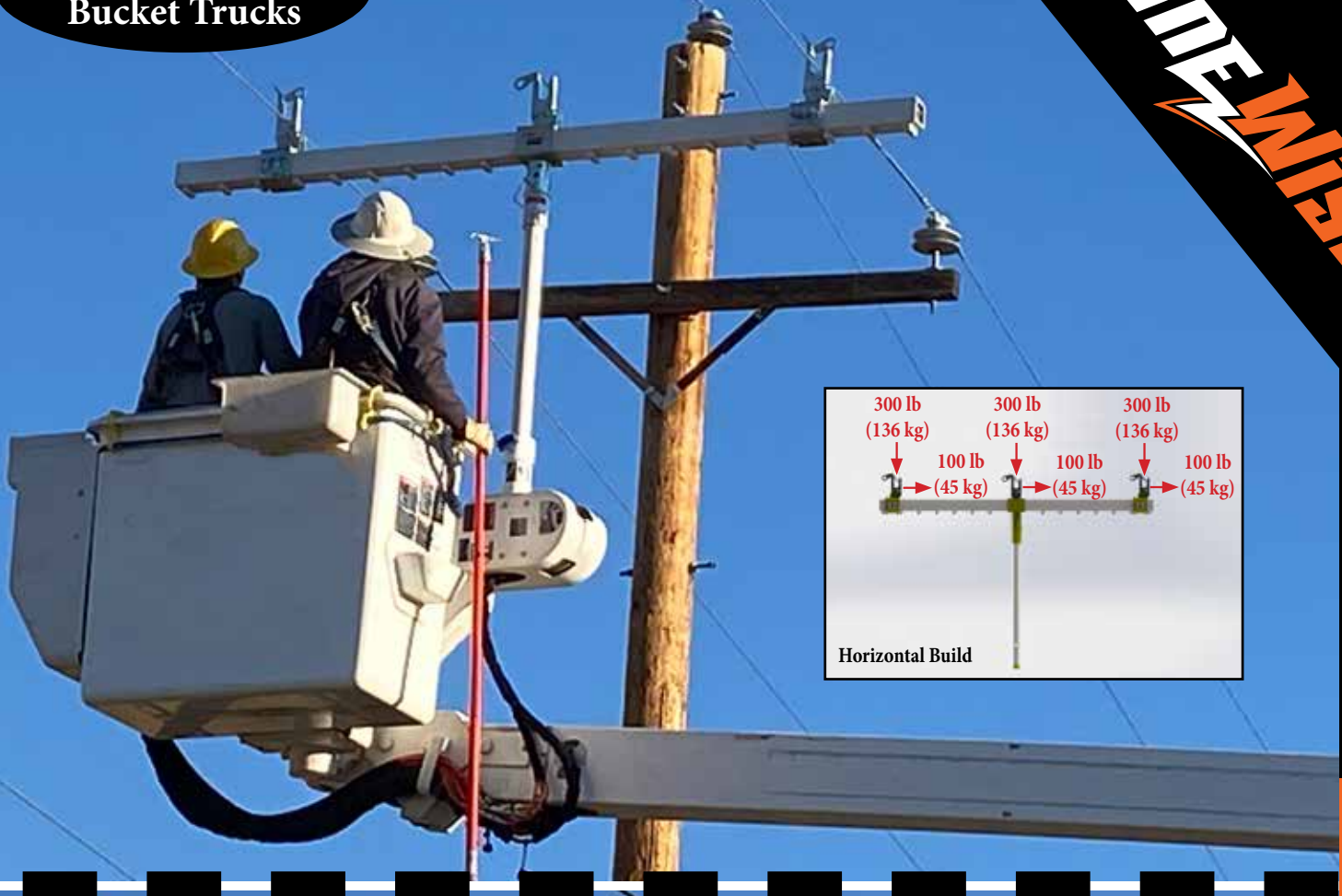
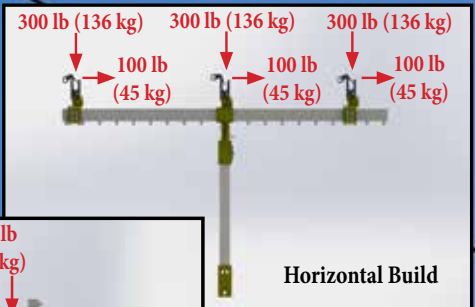


**TLL-300B - for
Bucket Trucks**

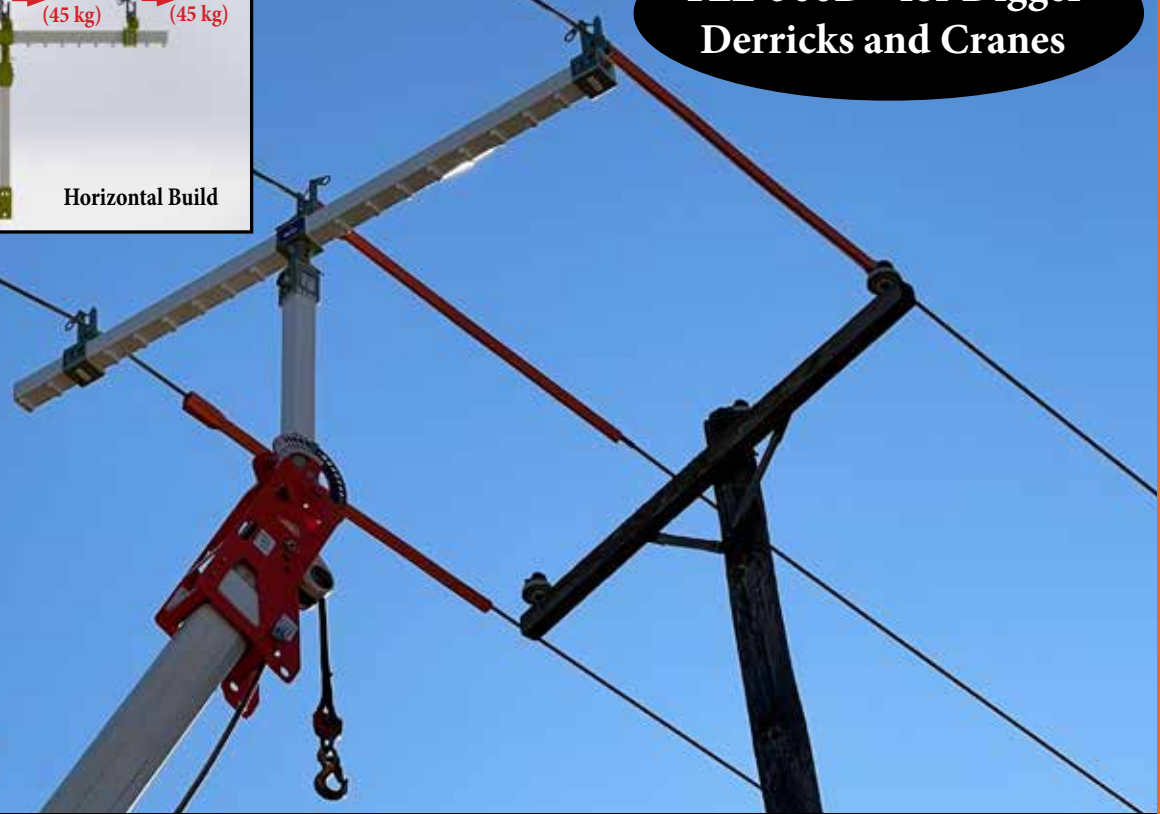
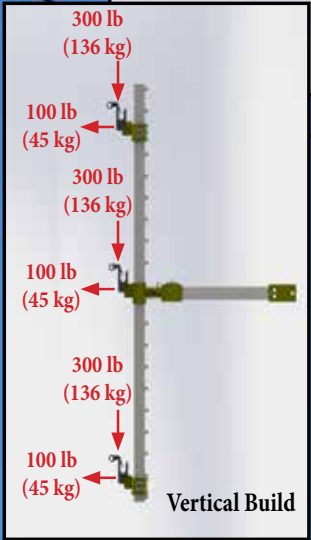
LINEWISE



TLL-300



**TLL-300D - for Digger
Derricks and Cranes**



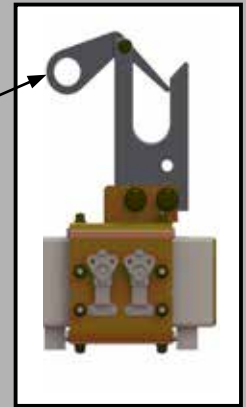
SPECIFICATIONS

	TLL-300B	TLL-300D
Voltage (#) Phases up to 34.5kV (3) phases	Capacity per phase 300 lb (136 kg)/900 (408 kg) total with 100 lb (45 kg)/300 (136 kg) total side load	Capacity per phase 300 lb (136 kg)/900 (408 kg) total with 100 lb (45 kg)/300 (136 kg) total side load when using the 30" (762 mm) clear span mast
Max Phase Spacing Outside to Outside Center to Outside	7'6" (2286 mm) 3'9" (1143 mm)	9'4" (2845 mm) 4'8" (1422 mm)
Min Phase Spacing Outside to Outside Center to Outside	1'7" (483 mm) 8" (203 mm)	1'6" (457 mm) 11" (280 mm)
Total Unit Weight (Approx)	8' (2438 mm) crossarm with 31" (787 mm) clear span mast 110 lb (50 kg)	10' (3048 mm) crossarm with 12" (305 mm) mast 135 lb (61 kg) 10' (3048 mm) crossarm with 30" (762 mm) mast 146 lb (66 kg) plus 250-300 lb (114-136 kg) for the adapter
Phase to Ground	31" (787 mm) clear span fiberglass	12" (305 mm) clear span fiberglass 31" (787 mm) clear span fiberglass
Hydraulic	No	No
Mounting	Bucket Truck Material Handling Jib	Digger Derrick or Crane

FEATURES

- TLL-300B direct replacement for competitor's Three Phase Lift Assembly
- TLL-300B mounts to material handling jib of bucket truck
- No Cross Bracing Required
- Crossarm is pinned to the mast
 - crossarm can rotate 15 degrees each direction from 0 degrees (in line with the boom) and also 15 degrees each direction from 90 degrees to the boom
- Crossarm & mast are composed of fiberglass for di-electric properties
- 10-minute set up time = 2 linemen and no tools required
- Fiberglass is sealed using LineWise desiccant canister system

Wire holder spacing can be easily adjusted with no tools in 3" (76 mm) increments



Gravity gate for easy capture & release of wire

Wear pads protect the fiberglass

INSPIRED,[™]
TESTED,
AND TRUSTED
BY LINEWORKERS



Material and specifications are subject to change without notice. Units in photos may include optional features. Contact a LineWise representative for available options. LineWise® and the LineWise logo are registered trademarks of Fritel & Associates, LLC and may not be used without permission.

© 2025 Diversified Product Development All Rights Reserved.

Patent Pending 08/21



254-757-1177 | sales@line-wise.com | line-wise.com