

The IWP, an insulated work platform attachment, converts a new or existing hydraulic, telescoping crane and derrick to a Category A insulated aerial lift.

The IWP:

- Permits bare-hand work and de-energized line construction
- Minimizes lineman fatigue and the need to climb towers
- Reduces the need for ladders and hot sticks
- Requires minimal equipment set-up time
- Increases utilization of a crane and derrick
- Eliminates shutdown of transmission lines for maintenance
- Increases work capabilities compared to an elbow-style lift
- Allows access to difficult work with a 45° jib articulation.
- Increases job functions performed with a hydraulic, telescoping crane or derrick
- Can be purchased for a fraction of the cost of a dedicated, insulated aerial lift device.



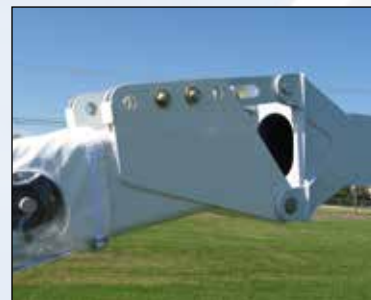
Basket Controls: Fully proportional radio controls provide operation of telescope, boom and rotation functions enabling the operator to better position the platform for the work being performed.



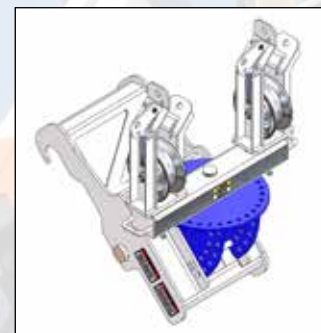
Corona Ring: The high performance, sharp-edge corona ring reduces current leakage and is rated to 500 or 765kV. Easily removeable, protective jib and corona ring covers guard against damage during transport.



Desiccant Canister: Moisture in the sealed jib is detected in the desiccant canister and is visible from the ground when the IWP is working, stowed, covered or uncovered.



Jib Articulation: Unique slot-link adapter at crane enables pinning at ground level and lifting into position.



Bundle Lifter: Can lift 2 conductors, up to 2500 lb (1134 kg) each. Rotates 180°, and adjusts to jib angles from 35° to 80° in 5° increments. Can be replaced by a single conductor lifter with a capacity of up to 5000 lb (2268 kg).



Shoe: Shoe allows jib to slide easily over the ground during set up.



Insulated Fiberglass Jib

- Filament wound with computer controlled, continuous-roving epoxy/anhydride resin.
- Jib sealed from moisture and other contaminants to maintain insulation properties.
- Coating on fiberglass provides exterior durability, chemical resistance, UV protection and outstanding appearance.

Steel Man Basket

- Rugged high strength-to-weight ratio.
- Easily installed/removed.
- Guards protect upper controls.
- Serviceable, self-lubricating bushings.
- Ground access for entering and loading.
- Quick attach for ease of installation.

Radio Control System

- Simultaneous operation of telescope, boom and rotation functions.
- Fully-proportional, state-of-the-art multiple controls.
- Speed selector on the platform controls provides operator a choice of “fast or slow” to match the application.
- LED displays in the control box provide self diagnostics and enhance serviceability.
- Programmable controls for precise and smooth operation when ramping up and down.



Current Leakage Monitor: Continual monitoring of current leakage is provided while approaching, bonding onto and working on energized conductors.



Insulated Jib: By insulating a non-insulated, telescoping crane or derrick, the need to purchase a dedicated, insulated aerial lift to perform bare-hand maintenance work is eliminated.

Line Lifters

Support lines from a crane during energized work. From energized and static line lifters, to single and dual roller lifters, to the new bundle lifter, our products increase crew efficiency by freeing up equipment previously dedicated to holding the line.



Pole Pullers

Heavy-duty pole pullers use hydraulic cylinders and cam action heads to deliver up to 60 tons of pulling force. Superior alternative to common pulling methods that can lead to equipment damage or injury.



Man Baskets

Rotating and yoke style baskets provide a large work area for increased productivity. Rugged steel construction exceeds industry standards. Universal mounting allows easy installation on multiple cranes.



LineWise

INSPIRED,[™]
TESTED,
AND TRUSTED
BY LINeworkERS



Material and specifications are subject to change without notice. Units in photos may include optional features. Contact a LineWise representative for available options. LineWise® and the LineWise logo are registered trademarks of Fritel & Associates, LLC and may not be used without permission.
© 2025 Diversified Product Development All Rights Reserved.

Standard IWP Equipment

- Basket controls
- 500kV sharp-edge corona ring
- Test bands and shield
- Sealed fiberglass jib assembly
- Two-man, 36" x 72" (914 x 1829 mm) basket
- 1,000 lb (454 mm) capacity
- Boom-tip bonding strap
- Desiccant canister
- Current leakage monitor & reel
- Jib cover
- 30° Jib articulation
- Battery charger
- Factory installation
- Side-stowing, insulated jib

Options

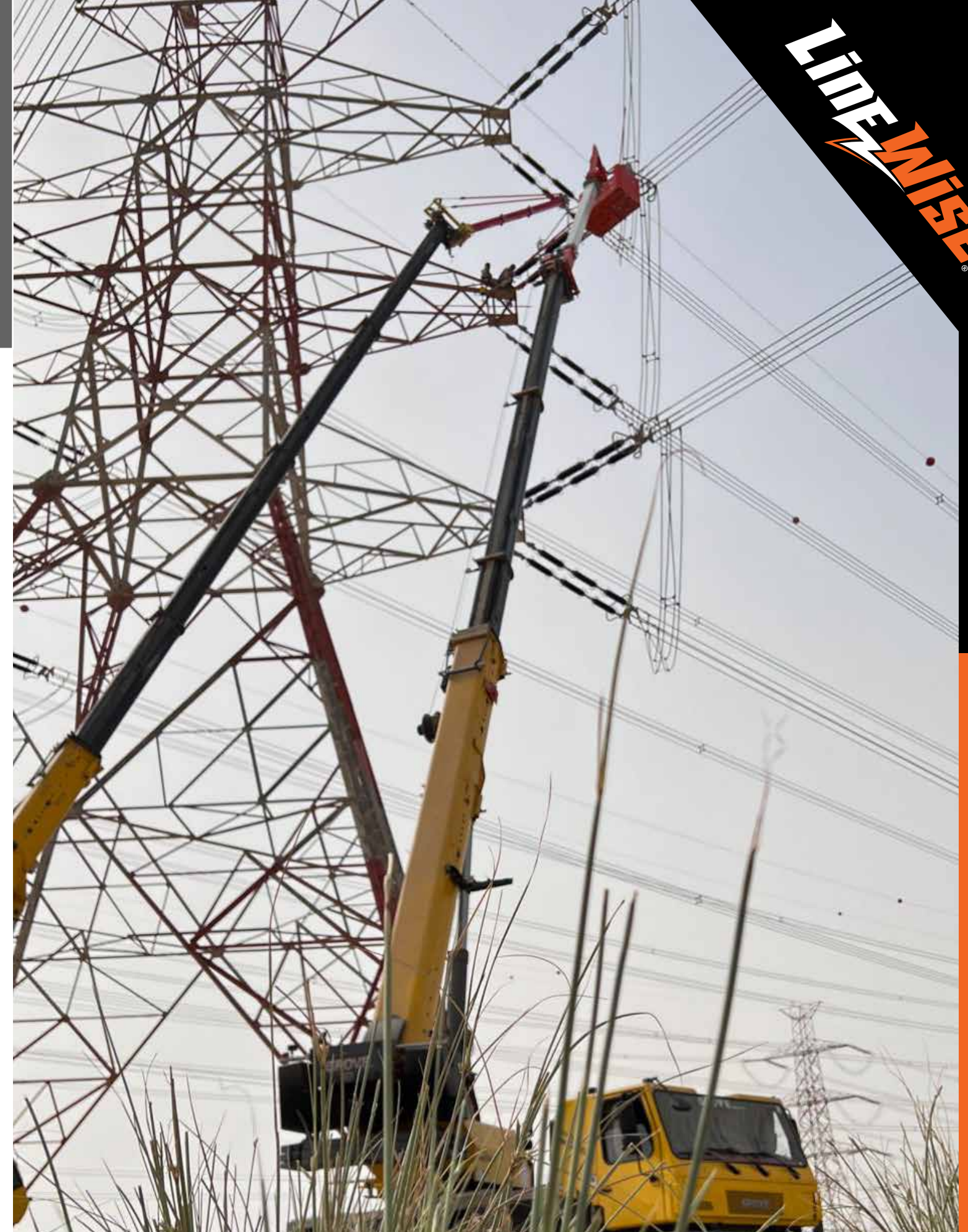
- 765kV
- Single-man or custom basket
- Hydraulic articulation
- 900-1,200 lb (408-544 kg) rotating basket
- 45° Jib articulation
- Bundle lifter

Installation and Training

- IWP can be installed on most hydraulic, telescoping cranes or derricks
- Crane specifications are reviewed before all installations.
- Field or factory installation and training is provided.

Quality Assurance

- 500kV qualified
- Meets or exceeds all applicable portions of ANSI A92.2
- Every unit is EHV qualified by an independent testing laboratory



LineWise

IWP