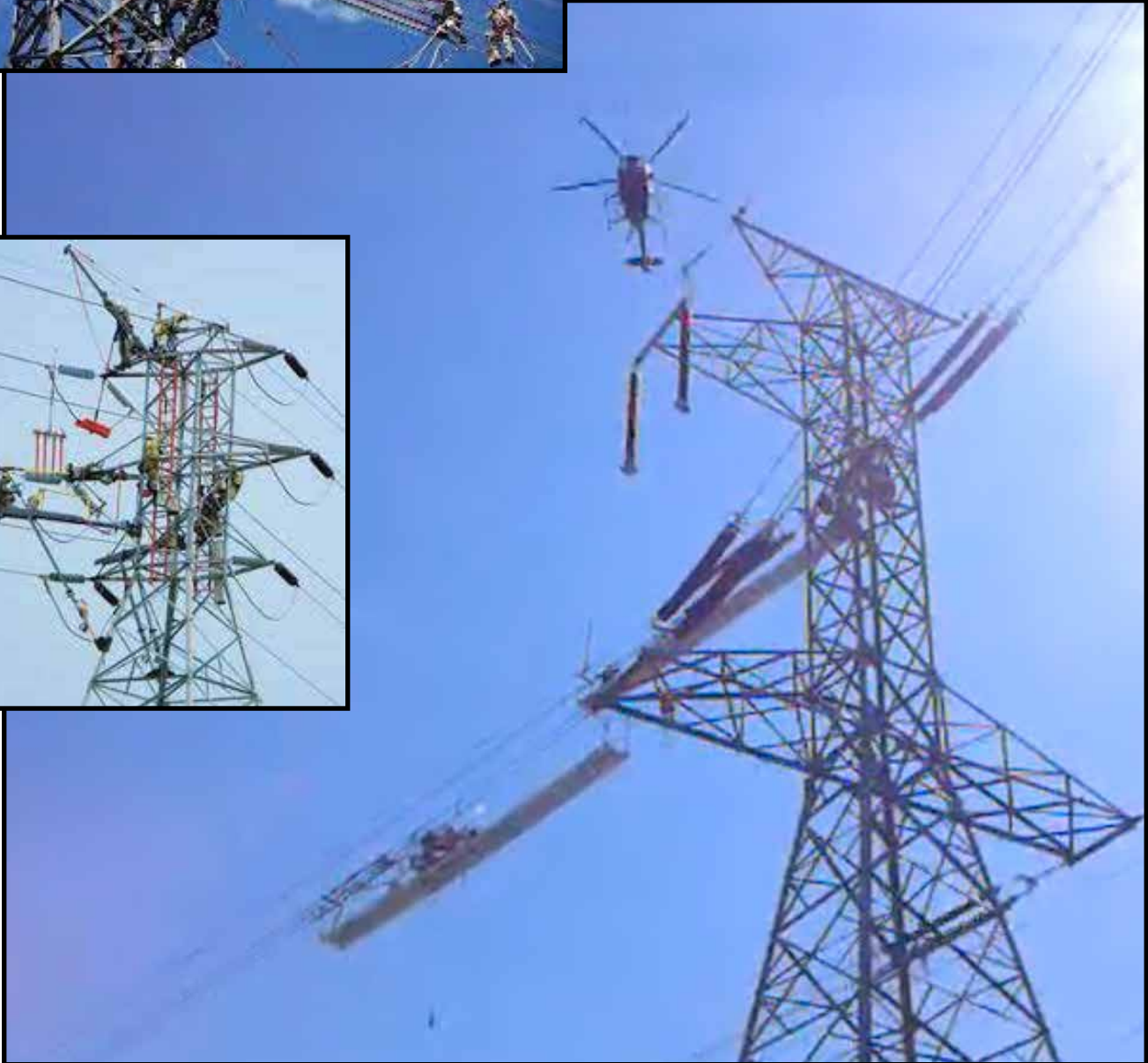


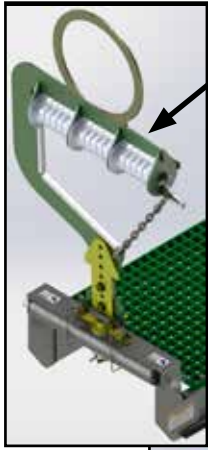
LINEWISE

Tower Platform



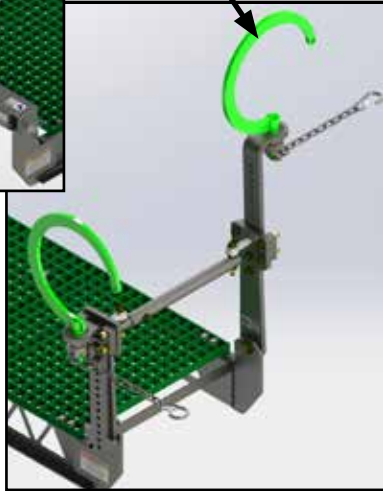
SPECIFICATIONS

Length	40' (12192 mm)
Width	2' (610 mm)
Weight	800 lb (363 kg)



Roller guide hook to attach to conductor

Adjustable height hooks to attach to the tower

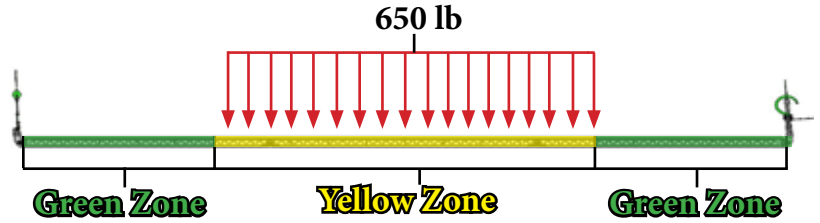


FEATURES

- Fiberglass decking
- 2 adjustable height hooks with a rated safety chain for attaching to tower
- 1 roller guide hook with a rated safety chain to attach to the conductor
- Can be flown by crane or helicopter

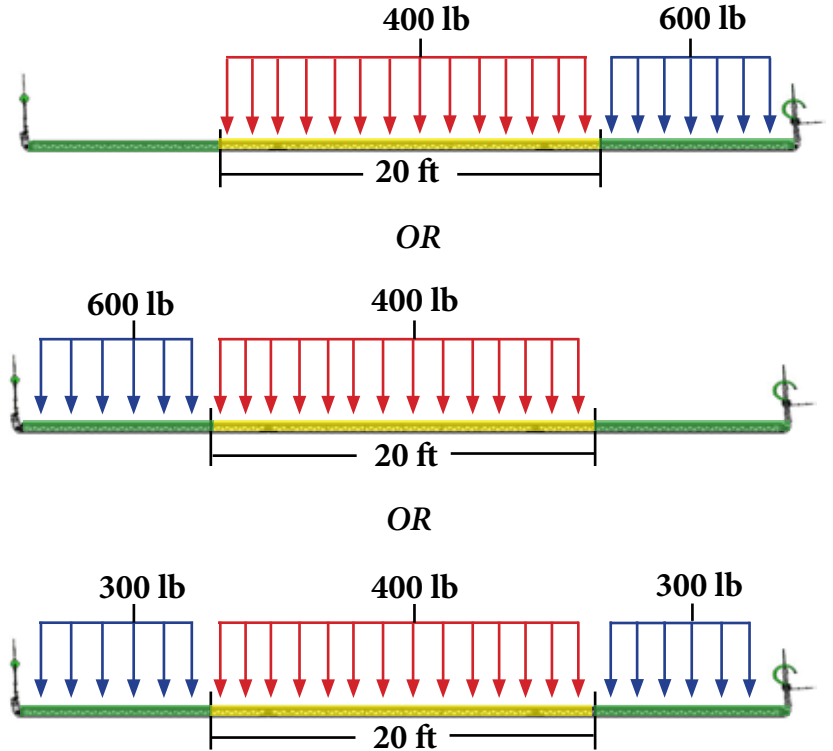
Single Load

If there are no loads at all on the **GREEN ZONES**, the platform is rated to support 650 lb anywhere in the **YELLOW ZONE**



Distributed Load

If there are ANY loads in either or both of the **GREEN ZONES**, the platform is rated to support 400 lb anywhere in the **YELLOW ZONE** and 600 lb combined total anywhere in the **GREEN ZONES**



INSPIRED BY LINEMEN TESTED BY LINEMEN TRUSTED BY LINEMEN

Material and specifications are subject to change without notice. Units in photos may include optional features. Contact a LineWise representative for available options. LineWise® and the LineWise logo are registered trademarks of Diversified Product Development and may not be used without permission. © 2024 Diversified Product Development All Rights Reserved.



254-757-1177 | sales@line-wise.com | line-wise.com