



Line Cart

- 300 lb. capacity
- Operator propelled



Swing Gate Wire Holder

- 500lb side & downward load; 200lb gate load
- 2500lb side & downward load; 500lb gate load
- Used on BOTH vertical & horizontal construction with the gate loaded



Low Profile Conductor Lifter

- Up to 4,000 lb.



SAG Plate

- Sag and terminate conductors off the dead-end yoke plate
- Eliminates excess rigging



Under Ground Pulling Sheave

- Rated to safely pull 3, 1,000 MCM cables at the same time
- 30,000 lb. hoist ring rating
- 31" diameter



Spacer Cart

- 600 lb. capacity
- Electric powered



Tower Platform

- Crane or helicopter deployed
- 600 - 1,000 lb. capacity
- Customized to your specifications



700 Research Ave.
Waco, TX 76705

254-757-1177
www.line-wise.com
sales@line-wise.com
©2024 Diversified Products



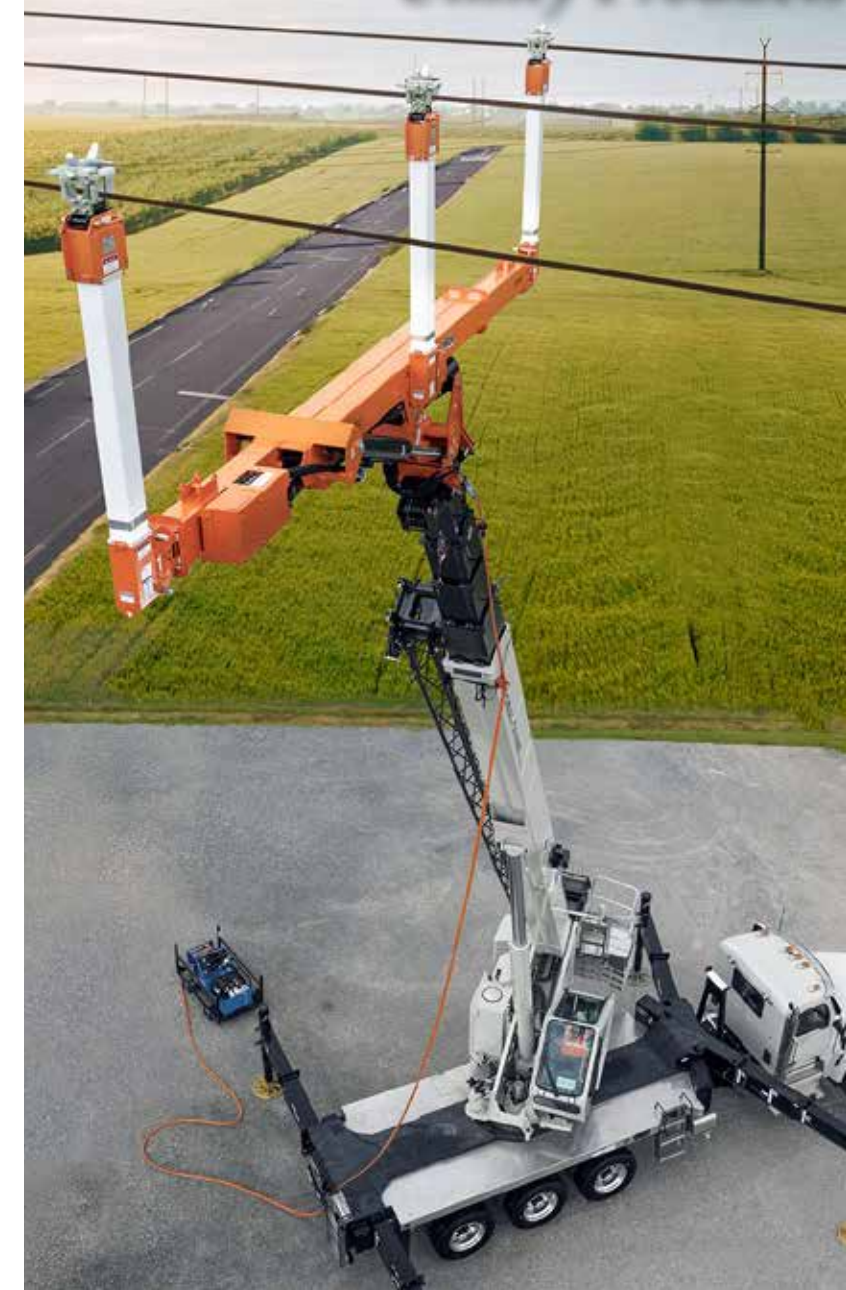
Material and specifications are subject to change without notice. Units in photos may include optional features. Contact a LineWise representative for available options.

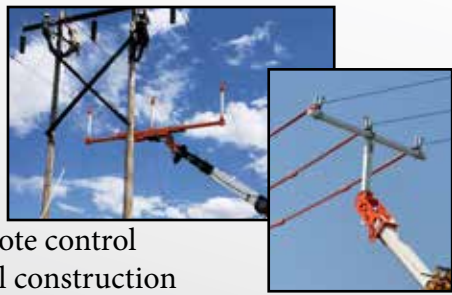
LineWise® and the LineWise logo are registered trademarks of Fritel & Associates, LLC and may not be used without permission.

© 2024 Diversified Product Development All Rights Reserved.



Utility Products





Triple Line Lifters

- 7,500 volts - 765kV
- Handheld radio remote control
- Vertical & horizontal construction
- Hydraulic articulation, extension & retraction
- For digger derricks, cranes and boom trucks

Manual/Hydraulic Energized Line Lifter

- Up to 345kV
- Up to 8,000 lb.



Insulated Work Platforms

- Up to 765kV barehand work
- Converts regular crane into barehand unit
- Working height up to 209'
- 1,200 lb. basket capacity
- Conductor lifter option



Insulator Spreader

- Up to 765kV
- Non-insulated tool to remove/install dead-end insulator strings



Roller Lifter

- 2,000 to 10,500 lb.
- single/dual/triple/heavy duty



Hot Line Base Plate

- Up to 4,000 lb.
- Temporarily holds a conductor in place during planned or emergency repairs



Bundle Lifter

- Up to 365kV
- Up to 3,500 lb.
- Keeps the yoke plate in the vertical position



Guard Arm

- Up to 1,200 lb.
- Mounts to boom trucks/digger derricks/telehandlers



Hot Stick Holder

- Mounts to bucket truck boom
- 2, 9 and 10 stick options



Hot Jib

- *CERTIFIED HOT TOOL*
- Capacity = same as OEM



Buddy Bushing

*****PROBLEM*****

Erosion of the attachment hole in the arm due to vibrations

****SOLUTION****

Buddy Bushing inserted into attachment hole in cross arm



DEPS

- Up to 30,000 lb.
- Max pole diameter: 6 ft
- Max pole length: 65 ft



Slip Joint Pole Jack

- Holds equipment needed to jack the pole sections together by supporting the cylinders on one end and the engine/hydraulic pump on the other.



Pole Sitter

- Up to 3,000 lb.
- Safer and superior to standard hole cribbing



Pole Puller

- Up to 120,000 lb.
- Unique jaws to grab pole
- Stub puller attachment

