

The Triple Line Lifter-4000 is an insulated crane attachment used to support up to three energized lines.

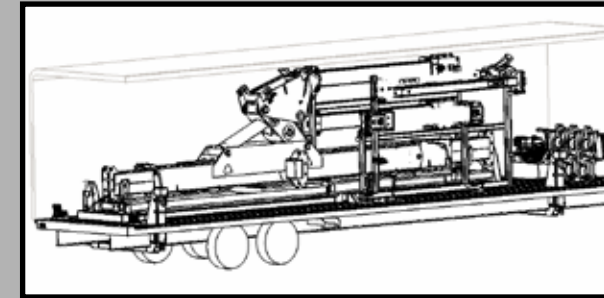
The TLL-4000

- Maximum capacity of 4000 pounds per phase with a total capacity of 12000 pounds.
- Own or lease a unit and use it on your own schedule.
- Faster set up time.
- Radio remote provides the crew in the bucket with complete control of the unit's functions and avoids having to relay desired movements to ground personnel working the controls.
- Ability to capture phases and neutrals/statics with the same crane. Reducing the equipment needed at a job site and further eliminates shutdown of transmission lines for maintenance.
- One base unit can fit multiple crane models with additional adapters and load charts.



FEATURES

- Hydraulic articulation, extension & retraction
- Quick attach insulators & wire holders
- Insulators are lab tested (retest every 2 years)
- Operation, Maintenance and Parts manuals
- Custom load charts for your crane model(s)
- Vertical and horizontal line construction
- High strength steel and fiberglass fabrication
- Holding valves on all cylinders
- Manual override control valve
- Handheld radio remote control
- Installed at ground level



Hydraulic Power Unit

- 3000 psi and 15 gpm
- Hose reel with power return
- Gasoline engine 40HP / electric start
- 130 ft. of nonconductive hose (2)
- Fork pockets, 4 lifting rings with rigging



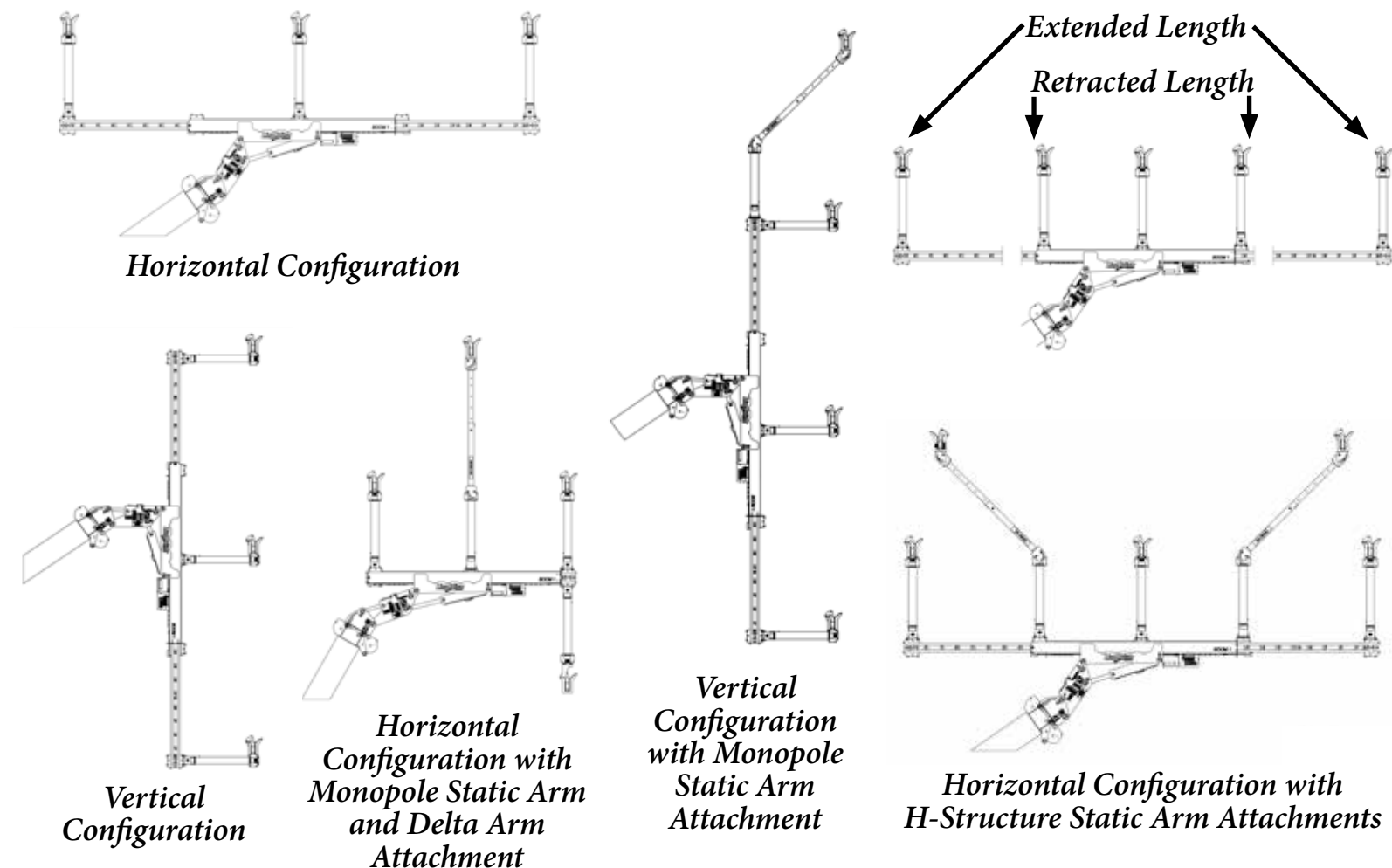
Transportation Trailer

- Lift rigging and down points
- Racks for:
 - Insulators, wire holders & pins
- 4 corner jacks to level skid to crane
- Steps/handrails to access boom tip for installation
- Tilt to raise unit to pin to crane

SPECIFICATIONS

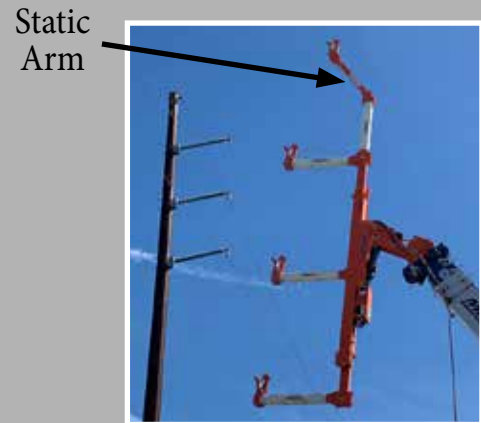
| | |
|--|--|
| Voltage (#) Phases 345 kV (3) phases | Capacity per phase 4000 lb (1814 kg)/12000 (5443 kg) total |
| Total unit weight (Approx.) TLL-4000 TLL-4000 w/(1) static arm TLL-4000 w/(2) static arms | 10350 lb (4695 kg) 11000 lb (4990 kg) 11700 lb (5307 kg) |
| Max. Phase Spacing Outside to Outside Center to Outside | 62' (18898 mm) 31' (9449 mm) |
| Min. Phase Spacing Outside to Outside Center to Outside | 32' (9754 mm) 16' (4877 mm) |
| Horizontal Configuration Max Load per Phase | 4000 lb (1814 kg) vertical load 1000 lb (454 kg) side load |
| Vertical Configuration Max Load per Phase | 4000 lb (1814 kg) vertical load 1000 lb (454 kg) side load |
| Maximum Load per Static Arm Wire Holder | 500 lb (227 kg) vertical load 200 lb (91 kg) side load |
| Insulator | Fiberglass |
| Hydraulic | Yes |
| Mounting | Minimum 200 Ton Crane |

CONFIGURATIONS

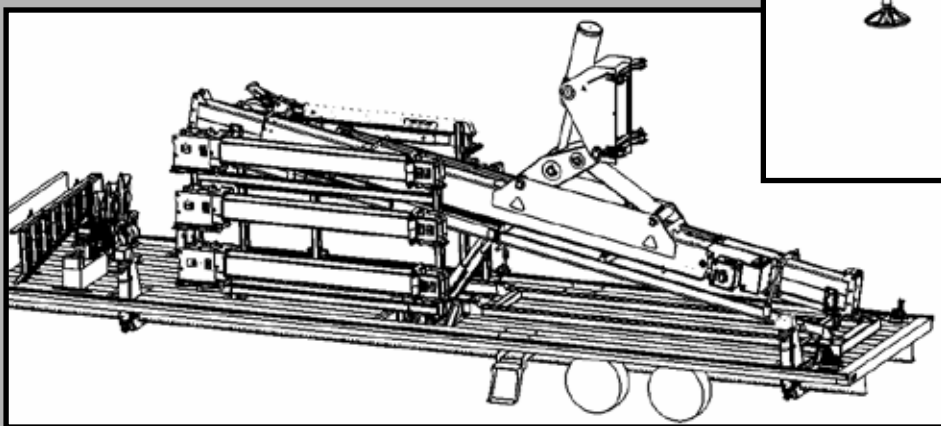
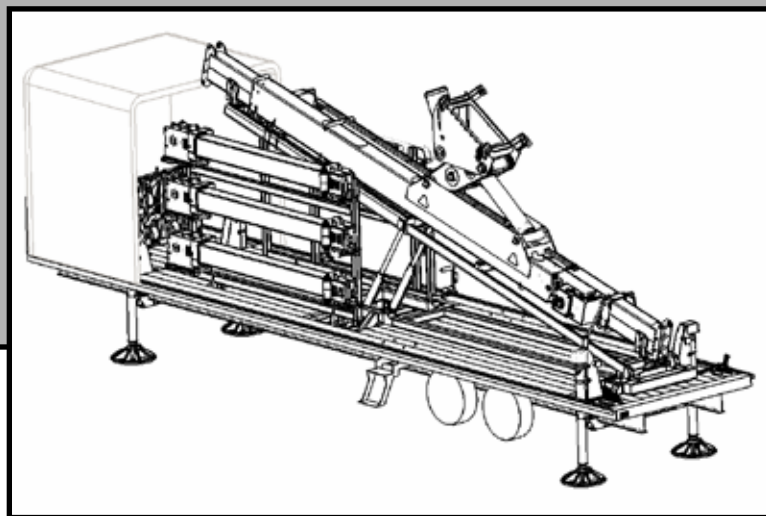


OPTIONS

- Adapters made for specific cranes
- Adjustable static arms for vertical or horizontal configuration
- Swing gate wire holders
- Vertical/horizontal bundle wire holders
- Product operational by hydraulics
- Storage box for additional insulators
- Fully covered skid on trailer



Swing Gate Wire Holder



**INSPIRED,
TESTED,
AND TRUSTED
BY LINEWORKERS**



LINEWISE

Triple Line Lifter-4000



Material and specifications are subject to change without notice. Units in photos may include optional features. Contact a LineWise representative for available options. LineWise® and the LineWise logo are registered trademarks of Fritel & Associates, LLC and may not be used without permission. © 2025 Diversified Product Development All Rights Reserved.