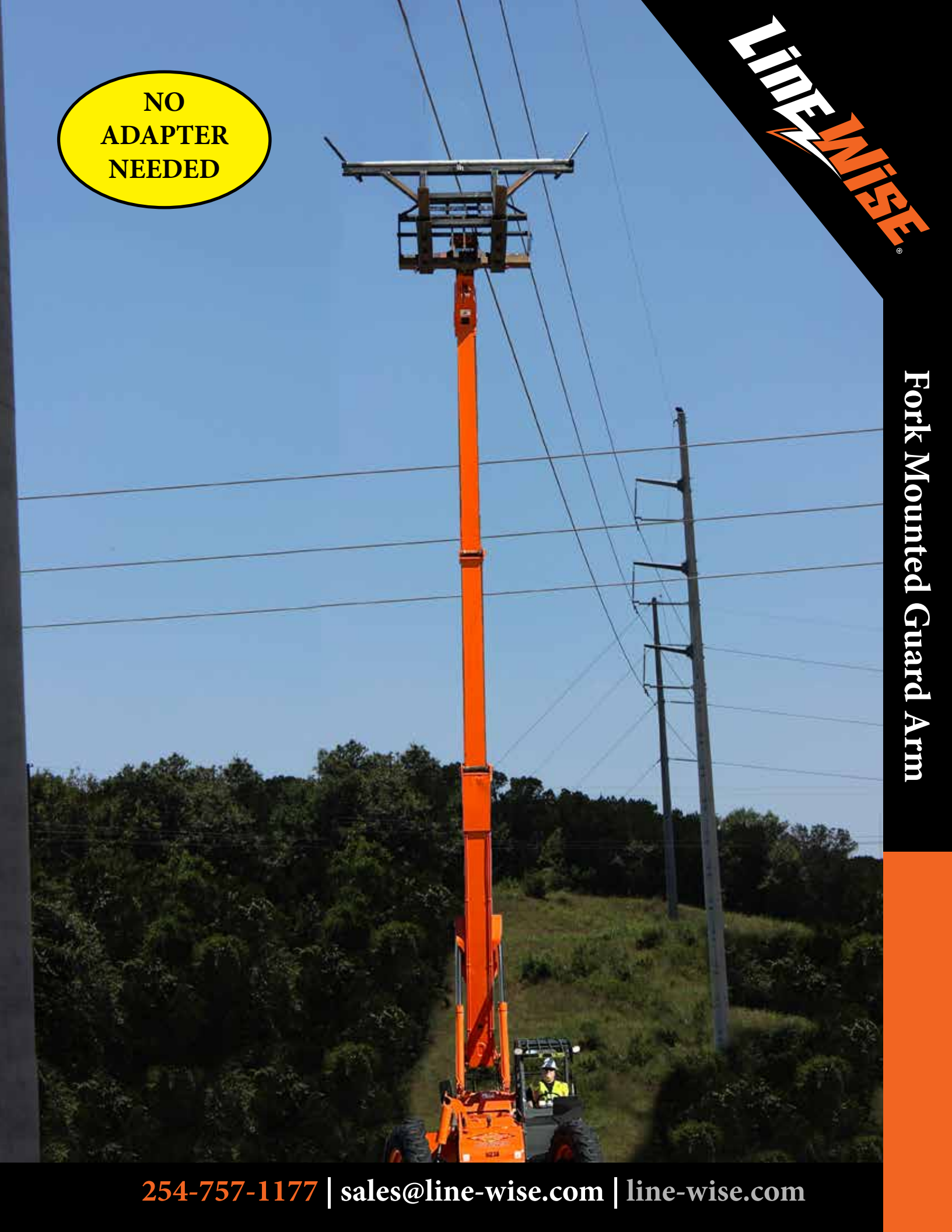


**NO  
ADAPTER  
NEEDED**

**LINEWISE**

**Fork Mounted Guard Arm**

**254-757-1177 | sales@line-wise.com | line-wise.com**

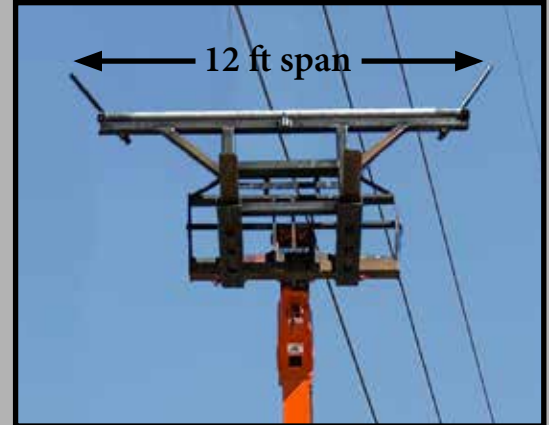


# SPECIFICATIONS

Dimensions	145" x 42" x 85" tall 3683 mm x 1067 mm x 2159 mm tall
Capacity (Guard Arm)	1200 lb (544 kg)
Capacity (Telehandler)	Minimum 8000 lb (3629 kg)
Weight	607 lb (275 kg)
Mounting	Telehandler

# FEATURES

- NO ADAPTER NEEDED
- 12ft span from tip to tip of ear
- Deploy/Stow in 30 seconds
- Fork pocket rear locking pin meets latest OSHA safety requirements
- Ears conveniently stow on unit
- Guard arm cross roller is on bearings to allow it to roll if the conductor comes in contact



INSPIRED BY LINEMEN TESTED BY LINEMEN TRUSTED BY LINEMEN

Material and specifications are subject to change without notice. Units in photos may include optional features. Contact a LineWise representative for available options. LineWise® and the LineWise logo are registered trademarks of Fritel & Associates, LLC and may not be used without permission.  
© 2023 Diversified Product Development All Rights Reserved.



254-757-1177 | sales@line-wise.com | line-wise.com