

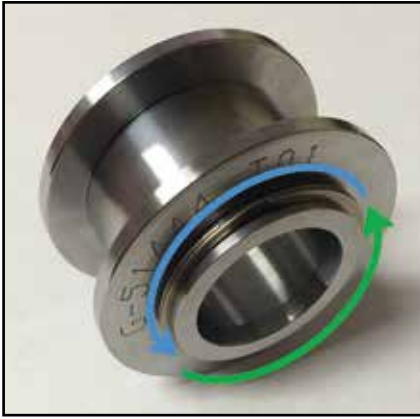
*Do your cross arms
suffer from erosion?*



*Install a Buddy Bushing
to repair and extend the
life of your hardware*



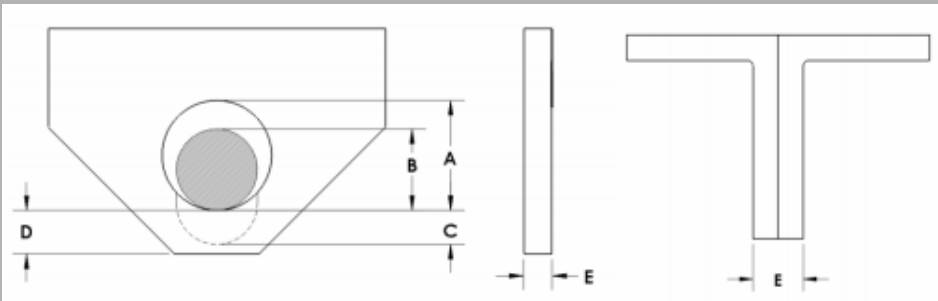
SPECIFICATIONS



Bushings are made from heat treated 17-4 and 416 stainless steel. Different grades of stainless are used to prevent galling that takes place when “like” materials are in contact with each other while moving or through vibration.

FEATURES

Every customer provides us with specific dimensions (hole sizes, plate thickness, wire load and spans) for their application. These dimensions are used to determine the size and type of buddy bushing needed and all calculations are reviewed and signed off by our Professional Engineers.



OPTIONS

Vang hole too small?

Our drop down plate solves your problem!



LineWise



INSPIRED BY LINEMEN TESTED BY LINEMEN TRUSTED BY LINEMEN

Material and specifications are subject to change without notice. Units in photos may include optional features. Contact a LineWise representative for available options. LineWise® and the LineWise logo are registered trademarks of Diversified Product Development and may not be used without permission. © 2021 Diversified Product Development All Rights Reserved.



254-757-1177 | sales@line-wise.com | line-wise.com