

Distribution Hot Arms



Horizontal/Vertical Auxiliary Arm

- Balanced vertical load: 1,350 lbs.
- 5' mast has 4' clear span fiberglass
- 12' arm has 5' clear span fiberglass
- Fits on crane, bucket truck and derrick boom tip

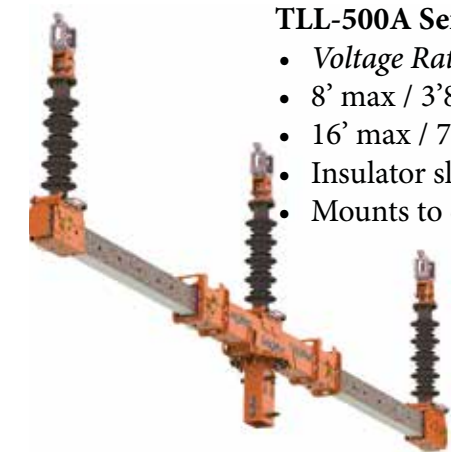


TLL-500

- Voltage ratings up to 72.5kV
- 9' sealed fiberglass crossarm
- 500 lb. vertical and horizontal capacity
- Positive lock every 15° of horizontal rotation, relative to crossarm

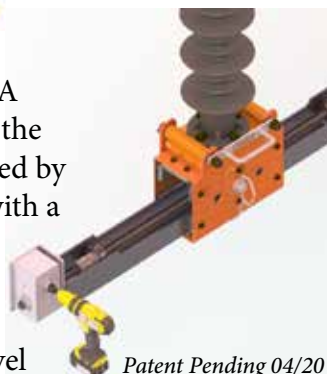
TLL-500A Series 1

- Voltage Ratings: 34.5kV - 72.5kV
- 8' max / 3'8" min between insulators
- 16' max / 7'4" min overall span
- Insulator sliders can pin every 3"
- Mounts to crane or digger derrick



TLL-500A Series 2

- Same components as TLL-500A Series 1, except the pinning of the slider every 3" has been replaced by the ability to move the slider with a lead screw assembly when torque is applied from an impact driver
- Allows for 30" of insulator travel



Patent Pending 04/20



Distribution Products

Hot Jib

- CERTIFIED HOT TOOL
- Capacity = same as OEM
- Clear span insulation = varies with model, 28" - 36"
- Interchangeable with existing hydraulic/manual extendable jib



Under Ground Pulling Sheave

- Rated to safely pull 3, 1,000 MCM cables at the same time
- 30,000 lb. hoist ring rating
- 31" diameter



XHD-30 Pole Puller

- Strong and efficient
- Capacity: 60,000 lbs.
- Unique jaws to grab pole
- Stub puller attachment
- Reuse the hole



LineWise
By Diversified Products

1001 Webster Ave.
Waco, TX 76706

254-757-1177
www.line-wise.com
sales@line-wise.com
©2020 Diversified Products



Photos and diagrams are for promotional purposes only.

Product design and specifications may change without notice or obligation.

LineWise

Utility Products



Triple Line Lifters



Vertical Configuration w/static option

- TLL-1300**
- 1,300 lb. vertical load per conductor
 - Handheld radio remote control
 - Mounts to cranes and boom trucks
 - Hydraulic articulation, extension & retraction
 - Vertical & horizontal construction
 - Quick attach insulators & wire holders
 - Conductor spacing: 6.5' - 14.5'
 - Installed at ground level

Voltage (#) Conductors	Capacity (lb) per conductor
69kV, 115kV (3) conductors	1300/3900 total
138kV (3) conductors	1200/3600 total
161kV (3) conductors	1100/3300 total
230kV (2) conductors	consult factory



Delta/Static

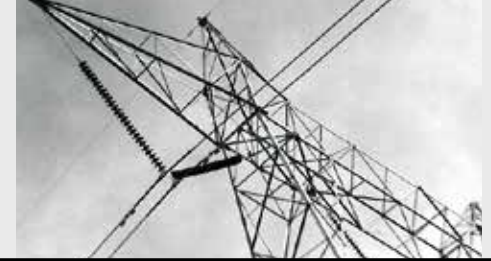


2' extender option



- TLL-2500**
- 2500 lb. vertical load per conductor
 - Conductor spacing: 10' - 24'

Voltage (#) Conductors	Capacity (lb) per conductor
115kV, 138kV, 161kV, 230kV (3) conductors	2500/7500 total
345kV (2) conductors	5000 total



Line Lifters

Manual/Hydraulic Energized Line Lifter

- Capacity: 1,000/2,500/4,500 lbs.
- Clear span fiberglass: 5'6"/10'/15'
- Vertical/horizontal bundles
- Support energized phase(s) from a crane



Folding Guard Arm

- Capacity: 1,000 lbs.
- Weight: 450 lbs.
- Mounts to boom trucks/digger derricks
- 3 lifting rings assist in mounting

Hot Line Base Plate

- Capacity: 1,600/4,000 lbs.
 - Temporarily holds a conductor in place during emergency repairs
- U.S. Patent No. 8,299,357 & 7,750,236*



Bundle Lifter

- Capacity: 3,500 lbs.
- 10'-12' clear span fiberglass
- Picks up yoke plate & keeps it vertical
- Larger capacities available

Roller Lifter Single/Dual/Heavy Duty

- High strength steel
- Weight: 15-65 lbs.
- Working Load: 2,000-10,000 lbs.



Insulated Work Platforms

IWP

- 765 kV bare hand work
- Working height up to 209'
- 1,200 lb. basket capacity
- Bundle lifter option
- Optional HPU at boom tip
- **TRIED AND PROVEN**

Overhead and Substation Applications



INSPIRED BY LINEMEN TESTED BY LINEMEN TRUSTED BY LINEMEN

Buddy Bushing

- Safety
- Reliability
- Simplification
- Risk mitigation
- Inner bushing rotates
- HUGE cost reduction on repairs



U.S. Patent No. 8,399,770



*****PROBLEM*****

Erosion of the attachment hole in the arm due to vibrations

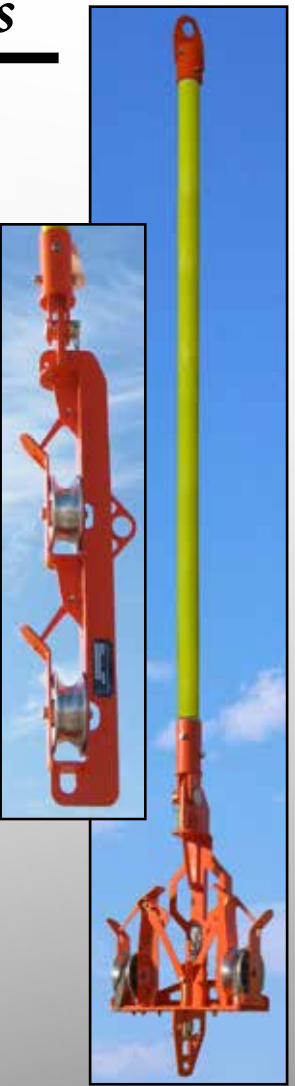
****SOLUTION****

Buddy Bushing inserted into attachment hole in cross arm

Job Specific Tools

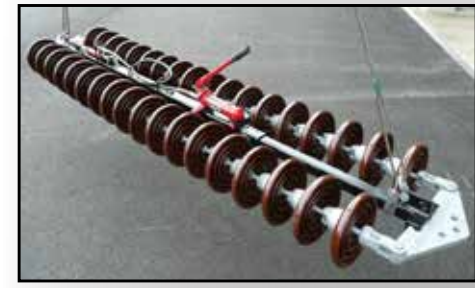
Insulated Tool Carrier

- 3 Tool Options:
 - 12"-18" Horizontal tool
 - 12" Vertical tool
 - 18" Vertical tool
- High strength & light weight
- Capacity: 3,500-10,500 lbs.



Insulator Spreader

- Non-insulated tool to remove/install dead-end insulator strings
- Capacity: 700 lbs.
- Custom options available



XHD-60 Pole Puller

- Strong and efficient
- Capacity: 120,000 lbs.
- Unique jaws to grab pole
- Stub puller attachment

