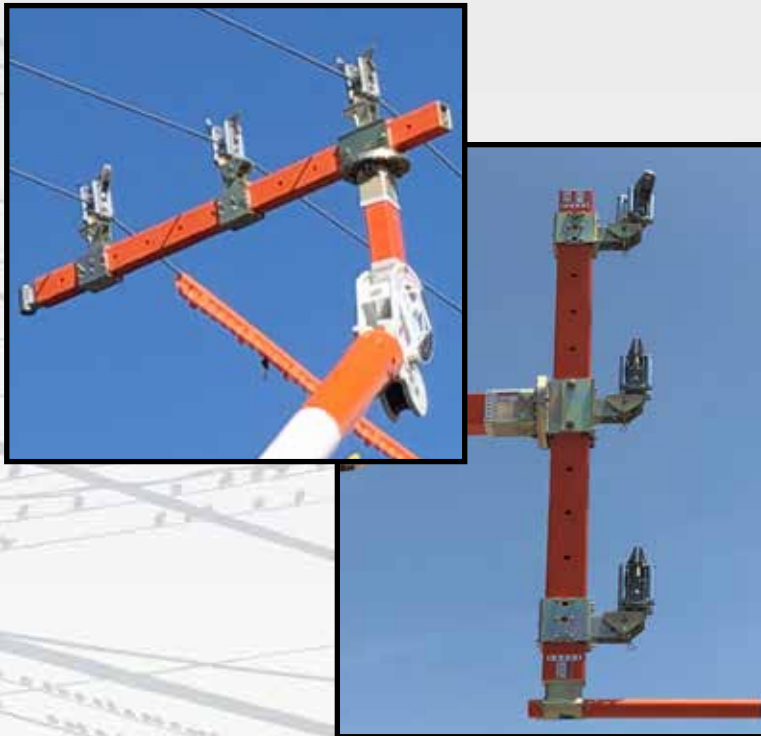


TLL-500

TLL-500 is an energized conductor supporting tool that helps to create work clearances for lines up to 72.5kV. It replaces the need for temporary structures and tag lines while giving positive control of distribution live lines.

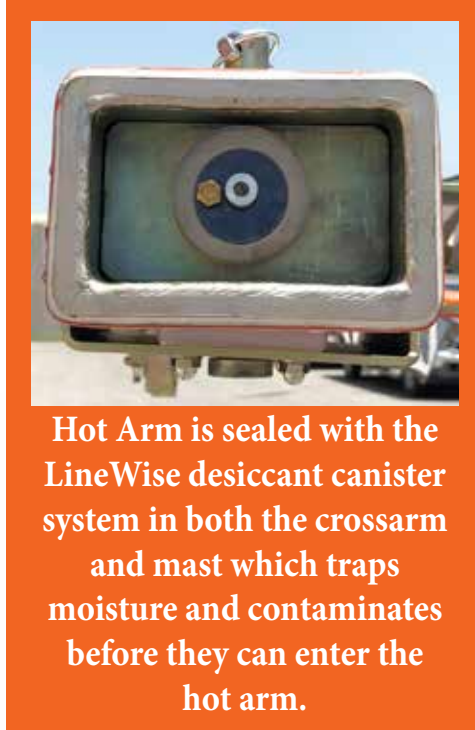
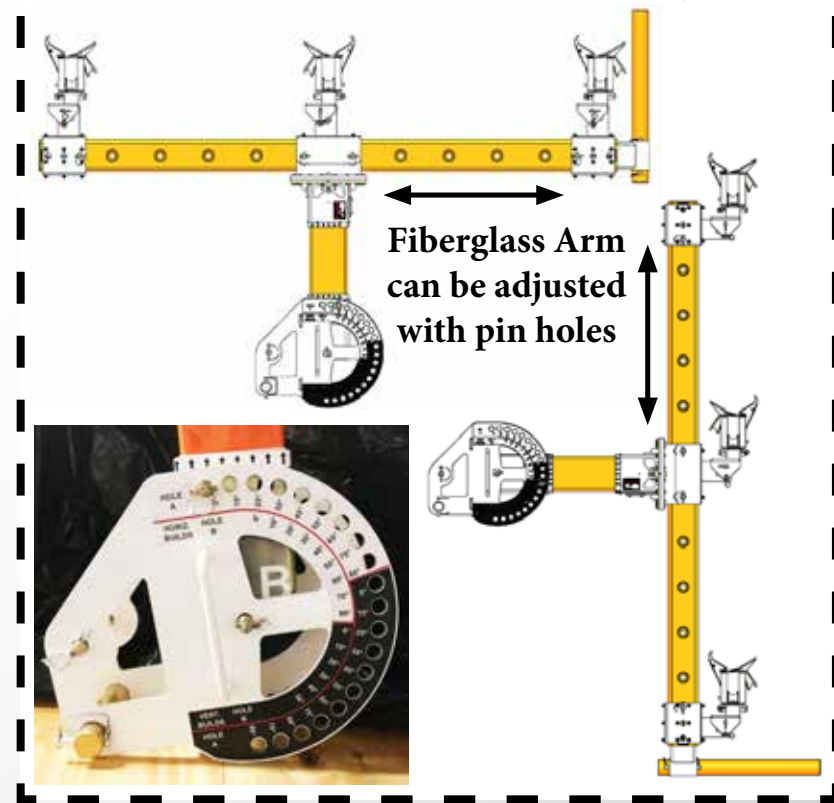
Features:

- Voltage ratings up to 72.5kV
- More capacity, features and degrees of movement than standard Aux Arm.
- Horizontal Configuration
 - 500lb capacity per conductor vertical
 - 500lb tangent with balanced load
- Vertical Configuration
 - 500lb capacity per conductor vertical
 - 500lb tangent with balanced loading
- Crossarm can be offset to one end (Alley Arm)
- Positive lock every 15° of horizontal rotation, relative to crossarm
- Conductor holder can be set at 3 inch increments
- Made to fit Digger Derricks or Boom Trucks

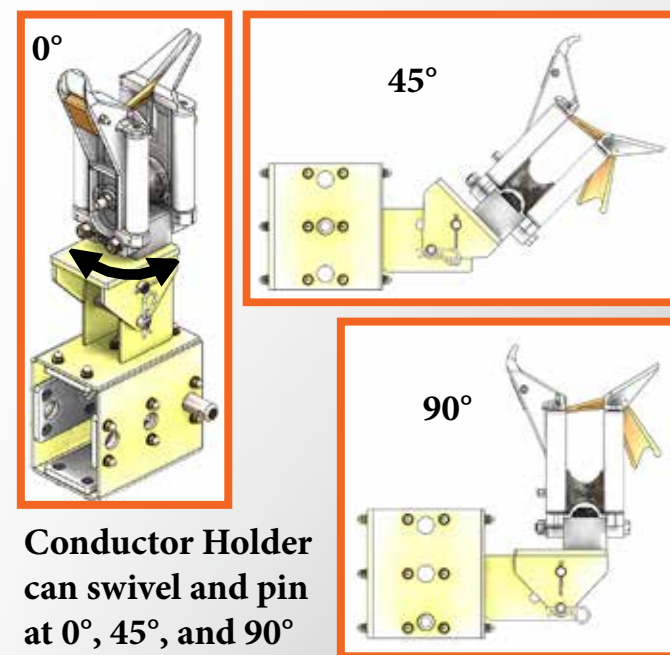
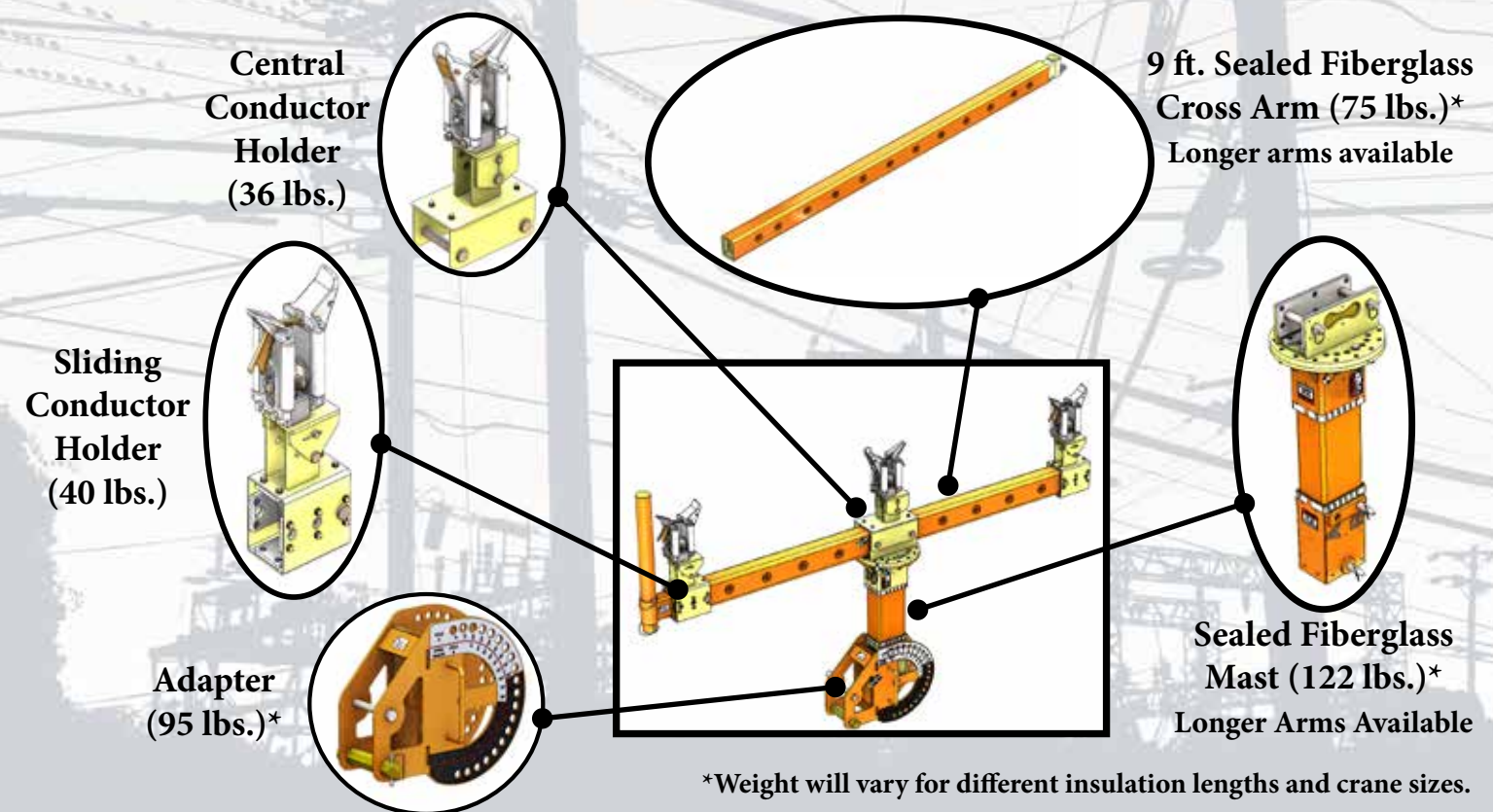


TLL-500

Horizontal and Vertical Configurations are possible from 0° to 80° boom angle.



Hot Arm is sealed with the LineWise desiccant canister system in both the crossarm and mast which traps moisture and contaminates before they can enter the hot arm.



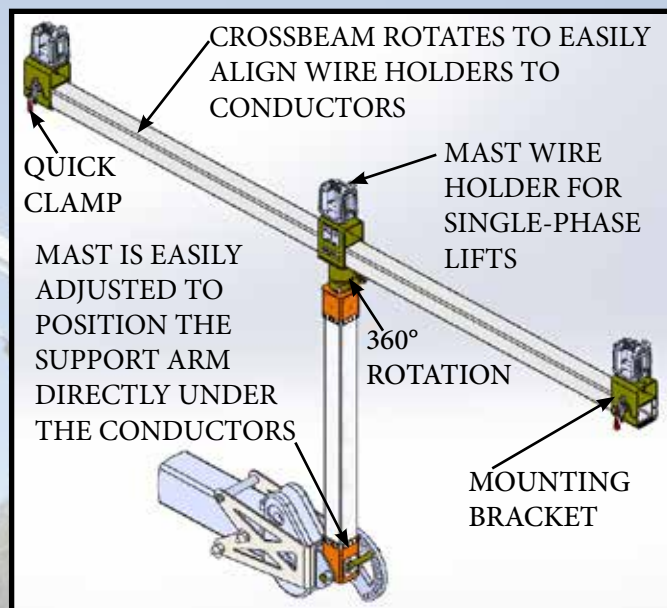
INSPIRED BY LINEMEN TESTED BY LINEMEN TRUSTED BY LINEMEN

Aux Arm

Hot Arms

Distribution

The Aux Arm is a practical tool for supporting energized conductors to aid in the replacing of insulators, crossarms and poles by quickly creating working clearances for your crews!



Features and Benefits:

- Converts to single line pick
- Will fit on crane or digger derrick boom tip
- Can be mounted to some bucket trucks

Specifications (AA-4-12-1350):

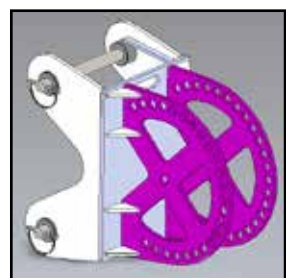
- 5' vertical fiberglass mast (4" x 4")
- 12' fiberglass crossarm (4" x 4")
- Mechanical Capacity:
 - Balanced Vertical Load: 1,350 lb
 - (450 lb per conductor)
 - Unbalanced Vertical Load: 1,000 lb
- Dielectric Capacity:
 - Mast clear span fiberglass is 4'
 - Crossarm has 5' clear span fiberglass



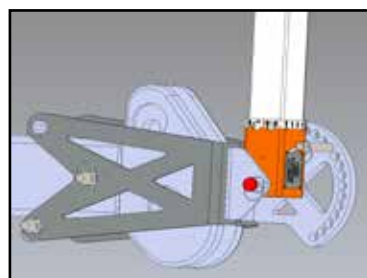
Options:

- Conductor holder - Standard & Heavy duty
- Neutral wire support

ADAPTERS FOR BOOM TRUCK, CRANE OR DIGGER DERRICK



TOOL-LESS MAST INSTALLATION AND ANGLE ADJUSTMENT



1001 Webster Avenue
Waco, TX 76706
254-757-1177
sales@line-wise.com
www.line-wise.com

